

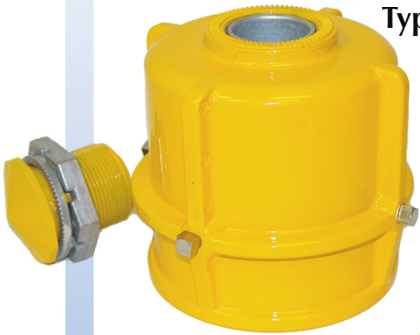
Post Top Slipfitters

For 4 1/2" O.D. Signal Posts



47,000 Tensile Strength Die-Cast Aluminum

Single-Port
Type



PTS-110

- Serrated Top for Positive Locking
- Single Opening for One-Way Signals
- Cast Ribs for Extra Strength
- Stainless Steel Set Screws
- New York City Designation "1SA"

Tri-Port
Type



PTS-120

- Tri-Studs are Stainless Steel
- Unit Comes Complete with Nuts and Captive Washers
- Cast Ribs for Extra Strength
- Stainless Steel Set Screws

Multi-Port
Type



PTS-101,-102, -103,-104

- Serrated Top for Positive Locking
- Four 1 1/2" Threaded Ports
- Use with Pipe Arms for Post-Top Mounting of Two-, Three-, & Four-Way Signals
- Cast Ribs for Extra Strength
- Stainless Steel Set Screws

Controller
Pedestal



PTS-125

- Use to Mount Controller Cabinet on Short Post
- Unit Comes Complete with Nuts and Captive Washers
- Cast Ribs for Extra Strength
- Stainless Steel

Please specify powder coated-finish when ordering.



**General
Traffic
Equipment
Corporation**

259 Broadway, Newburgh, NY 12550

(845) 569-9000

TOLL FREE:

(800) 222-2828

FAX:

(845) 569-1800

EMAIL:

info@generaltrafficequip.com

www.generaltrafficequip.com