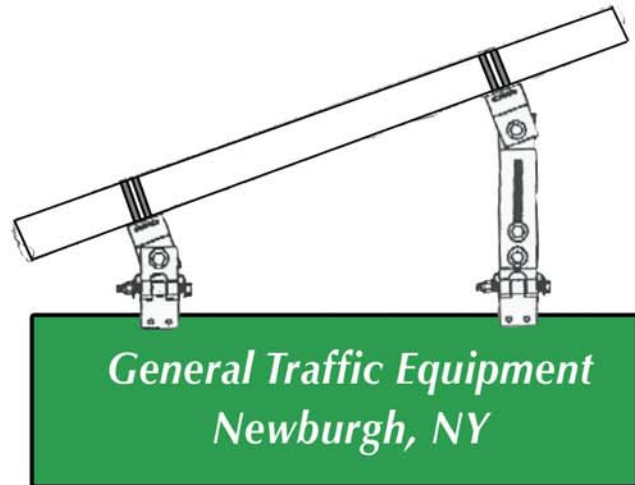


# Adjustable Sign Bracket

## SMA - 1000



- **ADJUSTABLE**
- **VERSATILE**
- **SAFE**
- **MAINTENANCE FREE**



*Lucy Says:*

*"Lets hang the dog from that thing"*

*The Adjustable Sign Bracket allows level mounting of traffic and street signs on Traffic Pole Mast Arms. Optional extension bars are available to accommodate large rises or signs.*

*Bands to any arm shape or diameter. Hangs single or double sided signs. Can be used in sets, as a single bracket or in groups of three or more depending on the sign size.*

*Swing design and lightweight aluminum decreases loads on arms and poles. Stainless steel springs dampen excess sign swing and keep signs from blowing out of view. Locking nuts resist loosening caused by vibration.*

*Aluminum alloy components, stainless steel hardware and oil impregnating bronze bearings insure long life with no additional maintenance.*



**General  
Traffic  
Equipment  
Corporation**

259 Broadway, Newburgh, NY 12550

**(845) 569-9000**

TOLL FREE:

**(800) 222-2828**

FAX:

**(845) 569-1800**

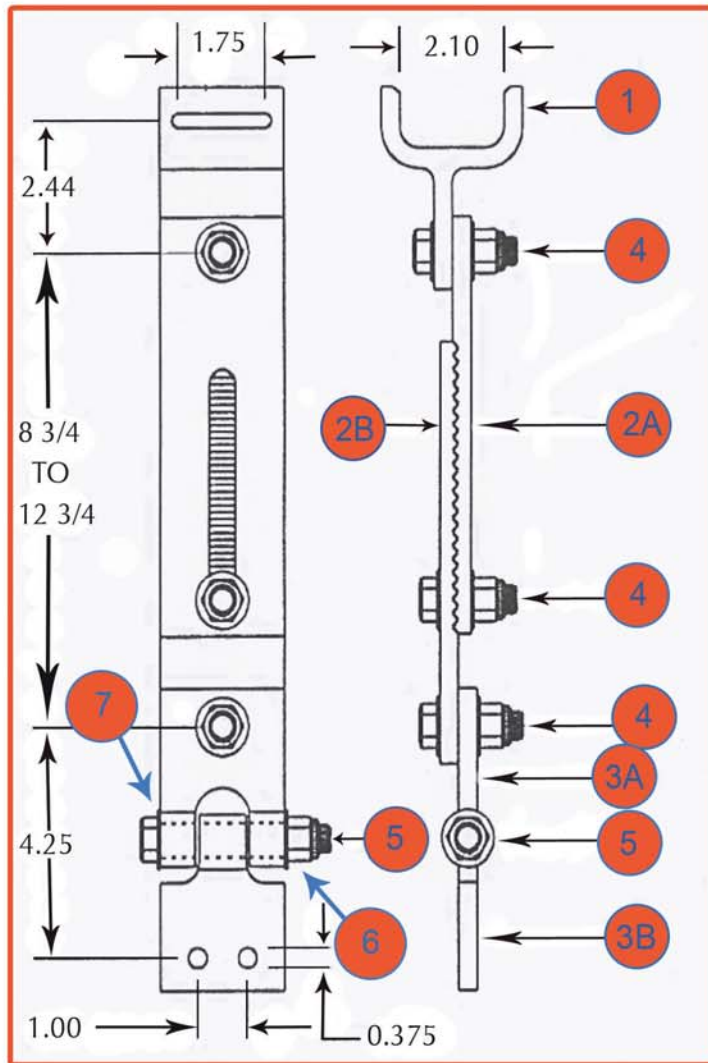
EMAIL:

**info@generaltrafficequip.com**

**www.generaltrafficequip.com**



# SPECIFICATIONS



1. TOP BRACKET, 6061-T6 ALUMINUM ALLOY
- 2A. ADJUSTABLE BAR, FIXED, 6061-T6 ALUMINUM ALLOY
- 2B. ADJUSTABLE BAR, SLOTTED, 6061-T6 ALUMINUM ALLOY
- 3A. FEMALE HINGE, 6061-T6 ALUMINUM ALLOY
- 3B. MALE HINGE, 6061-T6 ALUMINUM ALLOY
4. CONNECTING HARDWARE:  
1/2-13 X 1 3/4" LENGTH HEX HEAD BOLT, 300 SERIES ST. STEEL  
1/2-13 NYLON INSERT LOCK NUT, 300 SERIES ST. STEEL  
1/2" FLAT WASHER, 300 SERIES ST. STEEL
5. HINGE PIVOT ASSEMBLY:  
1/2-13 X 4.25" LENGTH HEX HEAD BOLT, 300 SERIES ST. STEEL  
1/2-13 NYLON INSERT LOCK NUT, 300 SERIES ST. STEEL  
1/2" FLAT WASHER, 300 SERIES ST. STEEL  
OILITE BUSHING, 5/8" O.D. X 1/2" I.D. X 1/16" SHOULDER X 1/2" LENGTH
6. RIGHT-HAND TORSION SPRING, 300 SERIES ST. STEEL
7. LEFT-HAND TORSION SPRING, 300 SERIES ST. STEEL

[www.generaltrafficequip.com](http://www.generaltrafficequip.com)

General Traffic Equipment